

FA Component & System Technology for The Best



CORPORATE GUIDE

Our Group Brand commitment: Striving to create new value,
symbolized by the letter "e".



The Fuji Electric Group is built on two vital resources—technological strength and customer trust. They are the foundation of the Group and are symbolized by the letter "F". For Fuji Electric, new value, or "e", is defined as constant evolution and contribution to the enrichment of society through business activities in harmony with the environment.

Using "F" to realize "e" is a vital element of our Group Brand, and is interwoven into our commitment to the world, society and our customers.

As "e-Front runners" the entire Fuji Electric Group is working to realize these goals.



In Partnership with the Future

Fuji Electric FA Components & Systems Co., Ltd., formerly Fuji Electric Co., Ltd. ED & C Drive Systems Company, is the leading manufacturer of FA components and systems.

Through development of competitive global products, such as magnetic contactors and general-purpose inverters, Fuji Electric FA Components & Systems supports the smooth operation of continually developing front-line capital equipment.

The theme of "in partnership with the future" highlights our dedication to creating a valuable future through high quality products that satisfy our customers while preserving the environment.

Under a pure holding company structure, each employee and company belonging to the Fuji Electric Group will provide customers with maximum satisfaction, maintaining clear awareness and responsibility as "e-Front runners."

The purpose of the transition to a pure holding company

We aim for the group's continued growth and a return to profitability by becoming the "industry's strongest specialists."

We will realize autonomous management.

Under an autonomous management system, each operating company will be able to carry out flexible and speedy operations. By being closer to the market and customers and being sensitive to their needs, each company will provide the highest caliber of products and services to maximize customer satisfaction.

We will maximize the corporate value of the group as a whole.

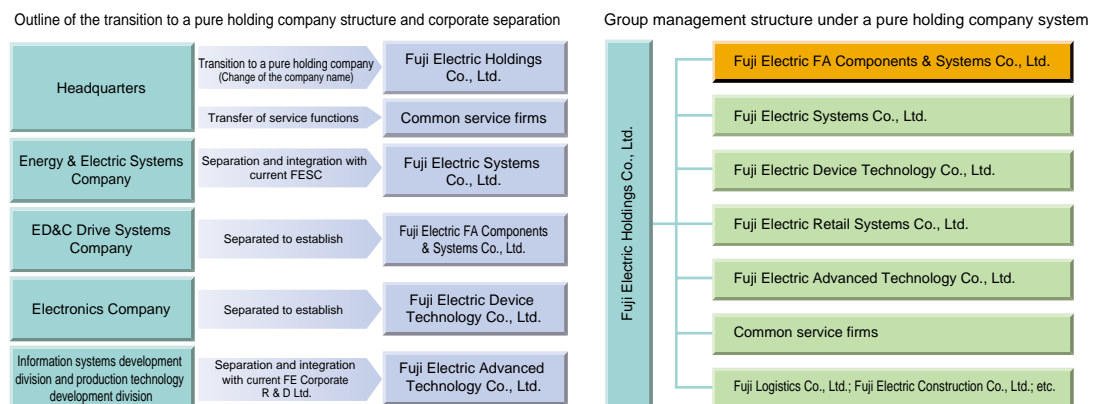
By thoroughly evaluating each operating company's business results, we will accelerate business selection and focus, which will lead to a well-balanced business portfolio that has the potential for growth and profitability.

We will create optimal working conditions in each area of operation.

To provide the highest caliber of products and services in the business field to which each operating company belongs, we will review the conventional, uniform working conditions to adopt a flexible system that reflects the characteristics of each business field and the contributions of each operating company.

The group's organizational structure after the transition

The Fuji Electric Group will consist of a pure holding company, operating companies, a research and development company, and common service firms.



Corporate governance

We will establish a management structure in which responsibility and the authority to carry out business are clearly defined.

Basic concept

By separating the functions of supervising and executing business, the areas of authority and responsibility will be clearly defined. This will strengthen group management and allow operating companies to exercise speedy management as well as self-responsibility.

1. From the understanding that supervision and execution functions will naturally be separated in the transition to a holding company structure, the holding company's form of corporate governance will be based on the board of auditors system.
2. Directors of the holding company will be barred from holding directorships at group operating companies. The term of office for the directors of holding companies and those of operating companies is one year.
3. An executive committee will be established to give advice to the president of the holding company on such issues as management strategy and policies for the group as a whole.

Fuji Electric Holdings Co., Ltd.

Fuji Electric Holdings Co., Ltd., is positioned as the group's strategic headquarters, specializing in group strategy planning, and is expected to play a role in maximizing the corporate value of the group as a whole.

The holding company will:

- 1 Develop strategies to optimize the group as a whole
- 2 Optimally allocate group resources
- 3 Conduct corporate R&D (R&D planning and progress management) and commercialize R&D results
- 4 Monitor management within the group
- 5 Prepare strategies for the group brand

Mission

- To provide customers with satisfaction and value, aiming to be the strongest specialists in FA components —power distribution equipment, contactors, drive systems, power electronics, motion control, and human machine interfaces (HMI) —and in small-and medium-sized systems made using these components.
- To increase corporate value through reforms and actions.
- To actively promote protection of the global environment, and contribute to local communities.
- To create a workplace allowing active participation by its diverse workforce.



Message from the President

The Fuji Electric Group is dedicated to increasing customer satisfaction while closely watching the changing trends in the global business environment. We are focused on technical innovations that meet all industrial needs, new product development, and expansion of our sales and service network. The products of the Fuji Electric Group have received wide acclaim over the years, and we have grown to become the leading FA component manufacturing company thanks to our customers and society.

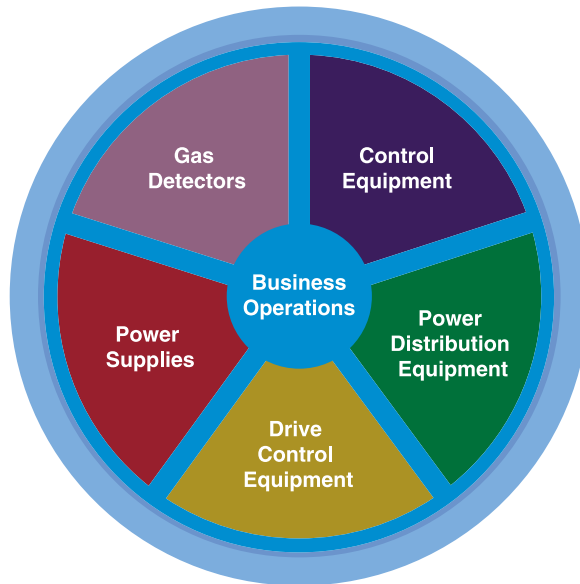
October 1, 2003 will see the transition of Fuji Electric to a pure holding company. This is aimed at further growth and expansion of our business operations as the industry's strongest manufacturer.

At Fuji Electric FA Components & Systems, each and every one of our employees will continually expand their perspectives and face challenges to move ahead. This corporate culture enables us to contribute to our customers and society even further.

We appreciate and look forward to your continued support as we take this new step forward together.

A handwritten signature in black ink, reading "Shigeaki Hori". The signature is written in a cursive, flowing style.

Shigeaki Hori
President and Representative Director



Five Key Operations

Products provided by Fuji Electric FA Components & Systems (Fuji Electric FA) support the precise operations of cutting-edge industrial facilities, including rapidly advancing factory automation (FA) production lines and intelligent buildings.

We offer numerous high-performance products such as low-voltage switching devices, general-purpose inverters, servo systems, programmable logic controllers (PLCs) and small-capacity uninterruptible power supplies that are compatible with international standards and meet demands for safety, reliability, compactness and energy-saving.

Fuji Electric FA is also promoting the development of packaged software and compatibility with open networks. Furthermore, we are constantly working toward new development to better satisfy customer needs.

Control Equipment

Our control equipment supports the functions of cities and industrial facilities, and plays an unrecognized yet vital role in modern society. This equipment operates nonstop 24 hours a day and is therefore expected to provide high quality and performance. Fuji Electric FA offers a rich variety of product models to meet these demands.

Power Distribution Equipment

Fuji Electric FA has developed advanced equipment essential to electrical facilities, such as molded-case circuit breakers and earth-leakage circuit breakers equipped with IC compatible with harmonic environment. We have been providing a wide variety of lineup, ranging from plants and housing to various industrial machines.

Drive Control Equipment

Even in high-tech production sites supported by IT and advanced factory automation, better motors and drives are always key to increased profitability. Our drive-control equipment meets customer needs for high performance and efficiency as well as stable operation while contributing to low noise and energy-saving.

Power Supplies

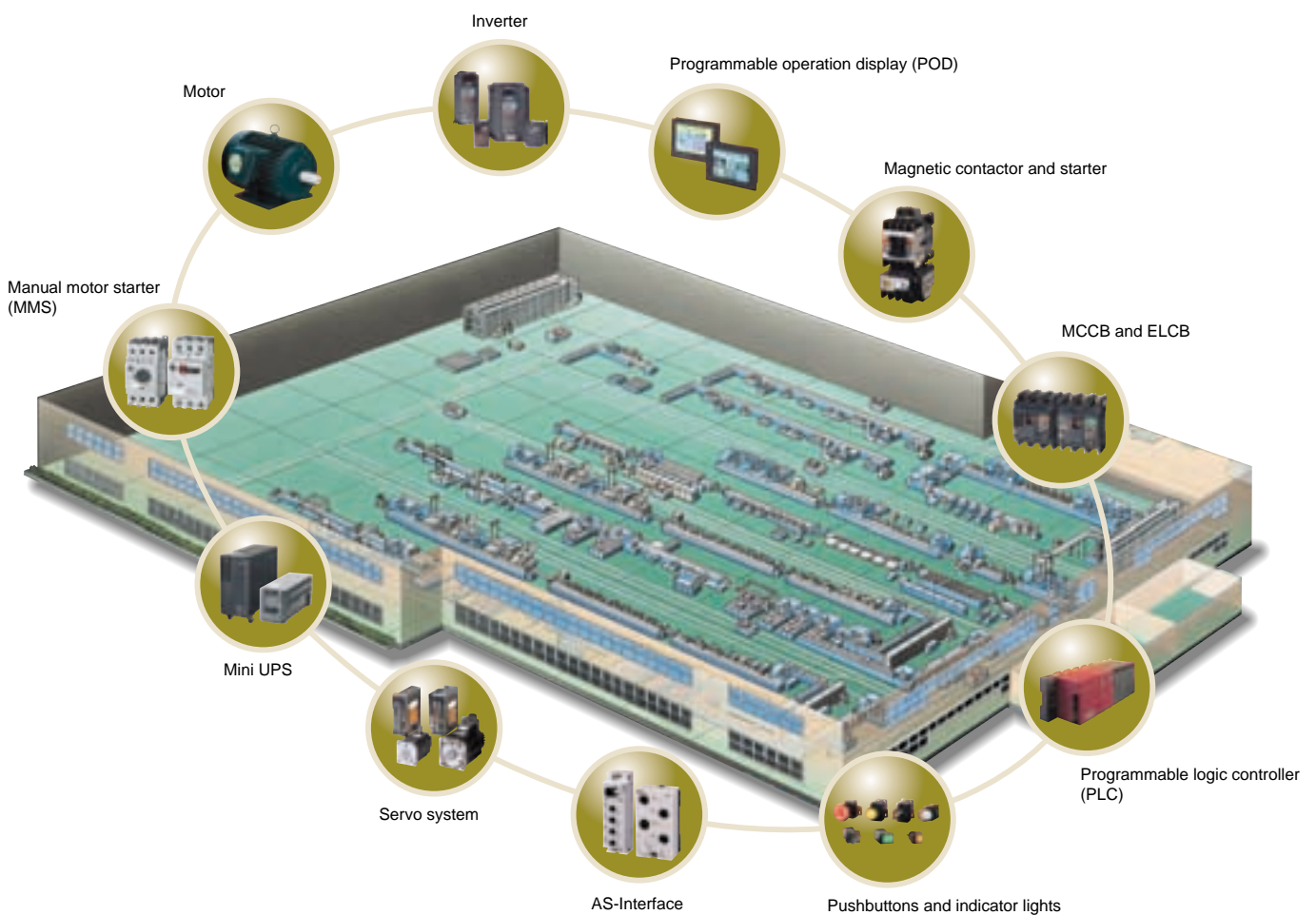
In today's high-tech urban environment, a stable power supply for intelligent buildings and offices is indispensable. Backed by substantial experience and knowledge as well as proprietary technological and developmental capabilities, our UPS and other power supply equipment have been well received by users around the world.

Gas Detectors

Upon detecting earthquakes, our gas meter with a built-in microprocessor having a remote reading feature, immediately shuts off the gas valve. A compound-function type gas detector with a built-in alarm can even detect carbon monoxide emissions due to incomplete combustion. Our products thus prevent gas-related accidents both in home and work environments where stricter standards apply.

F A C o m p o n e n t S y s t e m s

Fuji Electric FA offers a full lineup of components for factory automation (FA) systems so customers can easily construct networks that support their FA systems.



Today, the manufacturing sector advances toward systematization aiming at a real-time link between sales networks and top management. Flexible production systems promptly reflect order information in production activities, enabling production of varieties of products in small lots to meet market needs. The very high-performance FA components provided by Fuji Electric FA support these advanced systems. The components include microprocessor-integrated devices such as PLCs, magnetic contactors and starters that enjoy top market share in Japan, and drive-control equipment as well.

Control Equipment

Fuji Electric FA's actuators, sensors and controllers are "Smart Synapses in Factory Automation," accurately controlling various devices installed in industrial machines and facilities.



Magnetic contactors and starters

Our magnetic contactors and starters are reliable, global standard products, featuring advanced technology for compatibility with international standards, improved safety and environmental considerations. 200 million-unit mark in cumulative production attests to the product's superiority.



Pushbuttons and indicator lights

Our pushbuttons and indicator lights have been widely used in applications such as operator panels of industrial machines and switchboards with plenty of versatility, excellent operability and high reliability.



Programmable logic controllers (PLCs)

Our PLCs feature high processing speeds and compatibility with various networks for increasingly complex, high-speed and advanced machine and measurement control, and are scalable multicontrollers that exceed the conventional PLC framework.



Programmable operation displays

Our programmable operation displays are capable of machine operation, production line management monitoring and a wide range of other applications, offering a rich variety of screen sizes and display functions including networking, animation and video.

Power Distribution Equipment

As security guards of electricity, our products assure a constant supply of electric power in case power failure occurs.



Molded-case circuit breakers (MCCBs) /
Earth-leakage circuit breakers (ELCBs)

We are enhancing the compatibility of its "TWIN" series molded-case circuit breakers and earth-leakage circuit breakers with standardized outside dimensions by complying with IEC and UL standards. These products contribute to cost-saving, space-saving and rationalizing of design in distribution boards and switchboards.



Vacuum circuit breakers (VCBs)

Developed for compactness, ease of use and safety, the high-performance and multi-function breakers have been realized, featuring built-in CTs and incorporated with digital multi-function relay.



Vacuum magnetic contactors

These contactors are capable of highly frequent closing and opening circuits of motors and phase-advancing capacitors. Rated voltage is up to 6.6kV and rated current is up to 400A.



Low voltage fuses and power fuses

Low voltage fuses with rated current of up to 4000A and short-circuit breaking current up to 200kA are available. Power fuses with rated current of up to 400A and short-circuit breaking current up to 40kA are available.

Drive Control Equipment

Powerful and precise motor control with energy-saving ; our products are playing an important role in driving and controlling all kinds of equipment.



Inverters

Our inverters contribute to automatization, labor-saving and energy-saving in machines and facilities in industrial fields. They are all compact, yet powerful, ranging from high-performance torque vector control models to simplified models. Our full line of inverters is capable of satisfying every demand of variable speed control.



Servo systems

Fuji Electric FA provides a wide variety of servomotor systems ranging from quick-response ultra compact models to large capacity models, for applications such as industrial machines, semiconductor manufacturing equipment and electronic parts processing equipment. Further flexible control becomes possible with motion-control-use function blocks installed into PLCs.



Induction motors / Motor applied products

Our motors always contribute to mechanical power sources for a variety of industrial machines. Our full line motors from three-phase standard motors to geared motors and brake motors fully satisfy market demands.



Fans, blowers and pumps

Our Ring Blowers are widely used for adsorption transportation in various industrial machines. Coolant pumps with plenty of versatility are used for circulating cutting lubricants for machine tools. We enjoy top market share in Japan for these products.

Power Supplies

Don't let your networks lose power—our UPS protects your computer systems and important data against brownouts, power surges, and line noise.



Small capacity uninterruptible power supply "Mini UPS"

Our UPSs are available in on-line and off-line modes. Our compact and lightweight package is suitable for PCs and downsized servers.

Gas Detectors

We are always looking out for gas.
We are defending irreplaceable life and the property from gas leakage accidents.



Gas leakage detectors / Gas meters with a built-in microprocessor / Gas cutoff-valve controllers

Complete lineup, including compound function type gas leakage detectors with an alarm that detects incomplete combustion and fire. Our products thus prevent gas-related accidents both in the home and in work environments where stricter standards apply.

History

1923	Fuji Electric Co., Ltd. established
	Fuji Electric Head Office opened
1924	Began motor production
1925	Began operations at Kawasaki Factory (Currently Power Supply Equipment Factory)
	Began transformer production
1933	Completed expansion-type circuit breakers (Japan's first porcelain-clad circuit breakers)
1935	Telephone Division separated from parent company to become Fujitsu Limited
	Established executive committee, implemented departmental system
1937	Began production of watt-hour meters
1938	Completed 230kV ultra-high-voltage expansion-type circuit breakers (First in Asia)
	Began production of industrial measuring instruments
1942	Established Matsumoto Factory
1943	Established Fukiage Factory (Currently Value Engineering Center / ED&C Factory)
	Established Toyoda Factory (Currently Tokyo Systems Factory)
1944	Established Mie Factory
	Established Fuji Electric Hospital
1946	Achieved 10-thousand-unit mark in monthly production of E2-type watt-hour meters
1951	Developed contact current transformer
1954	Began production of magnetic contactors and starters
1956	Developed static frequency converter
1960	Began production of pushbuttons and indicator lights, Fuji Command Switches
1961	Established Chiba Factory (Currently Substation Systems Factory)
1963	Developed thyristor inverters
	Developed solid-state carrier-protection relay equipment
	Implemented an intracompany divisional system
1964	Established Central Research Laboratory (Currently Fuji Electric Corporate Research and Development Ltd.)
	Developed synchronous one-cycle air-blast circuit breaker
1967	Developed earth-leakage circuit breakers
1968	Began production of molded-case circuit breakers, Fuji Auto-Breakers
	Achieved 10 million-unit mark in cumulative production for magnetic contactors and starters
	Established Kobe Factory and Suzuka Factory through merger with Kawasaki Electric Mfg., Co.
1969	Began production of vending machines
1971	Began production of disconnecting switches and load-break switches
1973	Established Otawara Factory (Currently Value Engineering Center / ED&C Factory)
1974	Began production of epoxy molded transformers
1976	Began production of PLC, FUJILOG series
	Developed Video Sensors, pattern recognition system
1980	Began production of general-purpose inverters, FVR-F series
1981	Introduced DDC thyristor Leonard system
1983	Relocated Kobe Factory to new site
	Implemented centralized office and marketing system
1984	Began production of PLC, MICREX-F series
	Achieved 100 million-unit mark in cumulative production for magnetic contactors and starters

1985	Began production of SSC, solid-state contactors
1986	Introduced all-digital inverters, FVR-G5/P5 series
1987	Developed IGBT module
1988	Began production of small magnetic contactors, Orange Line series
1989	Began production of programmable operation displays, POD UD series
1990	Began production of PLC, FLEX-PC N series
	Began production of molded-case circuit breakers and earth-leakage circuit breakers, TWIN BREAKERS
	Introduced 32-bit DSP incorporated inverter, FVR-G7S series
1991	Achieved 150 million-unit mark in cumulative production for magnetic contactors and starters
	Implemented "New Vision 21 Plan" and eight-business group system
1994	Introduced high-performance general-purpose inverter, FRENIC 5000G9S/P9S series
	Achieved 2 million-unit mark in cumulative orders for inverter
1995	Began production of pushbuttons and indicator lights, AR and DR series
1996	Began production of programmable operation displays, POD UG series
1997	Achieved 3 million-unit mark in cumulative orders for inverter
1998	Developed and commercialized general-purpose, small-capacity intelligent power modules
	Introduced high-performance general-purpose inverter, FRENIC 5000G11S/P11S series
	Achieved 200 million-unit mark in cumulative production for magnetic contactors and starters
1999	Began production of medium to large capacity magnetic contactors and starters, NEO SC series
	Began production of PLC, MICREX-SX series
	Relocated Head Office to Gate City Ohsaki (Osaki, Shinagawa-ku, Tokyo)
	Introduced AC servo system, FALDIC- series
	Introduced Internal Company System; Energy & Electric Systems, ED&C Drive Systems, Electronics and Retail Support Equipment & Systems
2000	Introduced Executive Officer System
	Developed high-performance vector control inverters, FRENIC 5000VG7series
2001	Established Fuji Electric Motor Co., Ltd.
	Fuji Electric Menic Co., Ltd. and Fuji Electric Yutech Co., Ltd. merged to form Chubu Fuji Electric Co., Ltd.
	Established Japan Motor & Generator Co., Ltd. in a joint venture of Hitachi, Ltd. and Meidensha Corporation
2002	Established a representative office of China in Shanghai
	Established Fuji Electric (Changshu) Co.,Ltd. in a joint venture of Changshu Switchgear Mfg.Co., Ltd. and Friends Union Enterprises Ltd.
	Introduced AC servo system, FALDIC- series
2003	Introduced small block type PLC, SPB series
	Fuji Electric's motor sales division, Fuji Electric Motor Co., Ltd. and Fuji Denki Seiki Co., Ltd. restructured and combined to form a new company, Fuji Electric Motor Co., Ltd.
	Achieved 5 million-unit mark in cumulative orders for inverter
	Developed compact inverter, FRENIC-Mini series
2004	Introduced a new Group Brand: "Fe e-Front runners"
	West Japan Fuji Electric Co., Ltd. launched in a merger of Kansai Fuji Electric Co., Ltd., Chugoku Fuji Electric Co., Ltd. and Shikoku Fuji Electric Co., Ltd.
2005	Transition to a pure holding company structure

Corporate Outline

Registered Name	Fuji Electric FA Components & Systems Co., Ltd.
Head Office	Gate City Ohsaki, East Tower, 11-2, Osaki 1-chome, Shinagawa-ku, Tokyo 141-0032, Japan
Representative	President and Representative Director, Shigeaki Hori
Paid-in Capital	¥10 Billion
Assets	¥72 Billion
Net Sales (Plan in FY2003)	Consolidated: ¥165 Billion, Non-consolidated: ¥89 Billion
Number of Employees (Plan at FY2003 end)	Consolidated:5,400, Non-consolidated: 2,100

Consolidated Subsidiaries

Japan

Chichibu Fuji Co., Ltd.	Fuji EIC Co., Ltd.
Fuji Electric F-Tech Co., Ltd.	West Japan Fuji Electric Co., Ltd.
Fuji Electric Hi-Tech Corp.	Chubu Fuji Electric Co., Ltd.
Hakko Electronics Co., Ltd.	Kyushu Fuji Electric Co., Ltd.
Fuji Electric Motor Co., Ltd.	Hokkaido Fuji Electric Co., Ltd.
Fuji Electric Technica Co., Ltd.	Tohoku Fuji Electric Co., Ltd.
	Hoei Denki Co., Ltd.

Overseas

Fuji Electric Dalian Co., Ltd. (China)
 Fuji/GE Taiwan Co., Ltd. (Taiwan)
 Fuji/GE Private Ltd. (Singapore)

Business Fields and Main Products

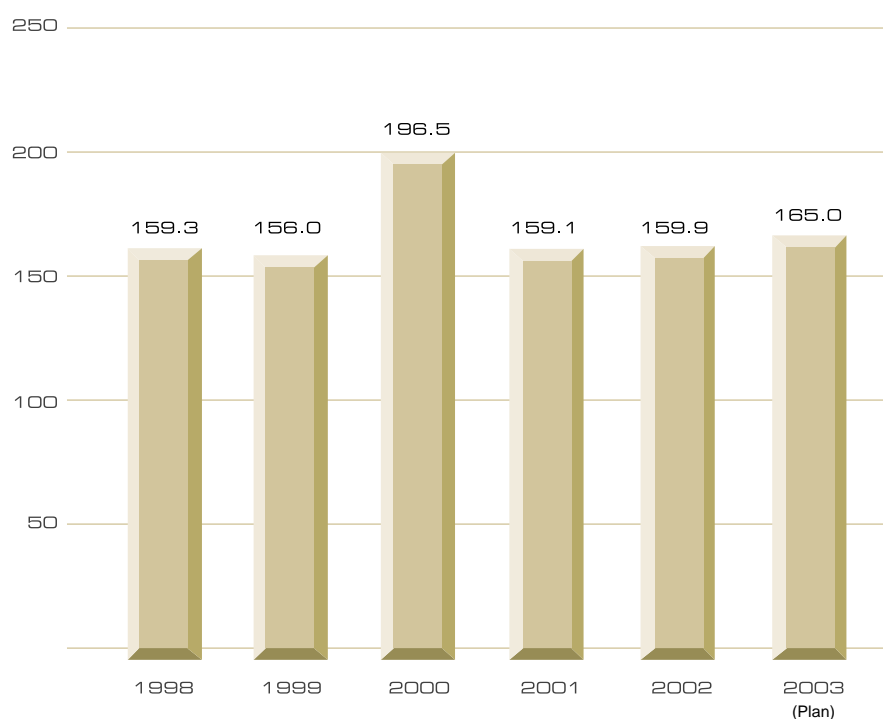
Business fields	Main products
Control equipment	Magnetic contactors and starters, Manual motor starters (MMSs), Operation and indication devices Programmable logic controllers (PLCs), Programmable operation displays (PODs) Control relays, Timers, FA sensors, AC power regulators (APRs)
Power distribution equipment	Molded-case circuit breakers (MCCBs), Earth-leakage circuit breakers (ELCBs) Vacuum circuit breakers, HV load-break switches, HV current-limiting fuses HV disconnecting switches, Power management equipment
Drive control equipment	General-purpose inverters, Servo systems, Motors, Blowers, Coolant pumps
Power supplies	Small capacity uninterruptible power supplies (Mini UPSs)
Gas Detectors	Gas leakage detectors

Net Sales

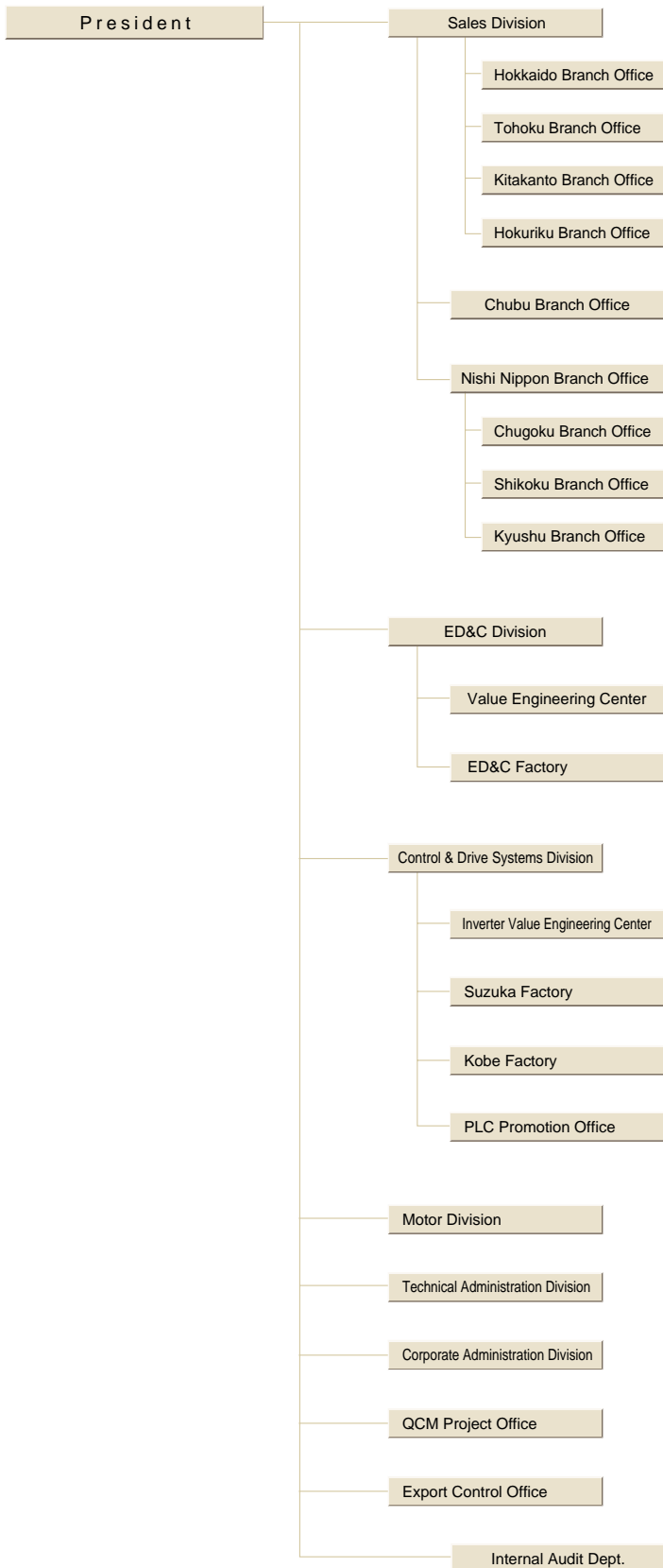
(Years ended March 31)

Net sales (consolidated)

¥ Billion



Organization Chart



Head Office / Production Footholds



Head office

Sales Div. / ED&C Div. / Control & Drive System Div. / Technical Administration Div. / Management Div.



Value Engineering Center / ED&C Factory (Fukiage)

Magnetic contactors and starters, Manual motor starters, Operation and indication devices, PLCs, PODs, Control relays, Fuses, Circuit protectors, HV distribution equipment, Multiplex signal transmission devices, Power management equipment, AS-i devices, etc.



Value Engineering Center / ED&C Factory (Otagawa)

ELCBs, MCCBs, Timers, Counters, Gas detectors, Proximity sensors, Photoelectric sensors, Limit switches, etc.



Inverter Value Engineering Center / Suzuka Factory

General-purpose inverters, Servo systems (amplifiers and motors), Induction heating inverters, etc.



Kobe Factory

General-purpose inverters, Vector control inverters, Inverters for machine tools, HV inverters, Uninterruptible power supplies (UPS), CVCF, and other power supplies

Sales Network

[Worldwide]

CHINA

FUJI ELECTRIC (SHANGHAI) CO., LTD.
Suite A-C,17F East Bldg. New Hua Lian Mansion No.755
Huai Hai Rd (Middle), Shanghai 200020
Tel. (+86) 21-6466-2810 - Fax (+86) 21-6473-3292

HONG KONG

FUJI ELECTRIC (ASIA) CO., LTD.
Room 1001, 10F, West Wing, Tsimshatsui Center, 66 Mody Road,
Tsimshatsui East, Kowloon
Tel. (+852) 2311-8282 - Fax (+852) 2312-0566

TAIWAN

FUJI/GE TAIWAN CO., LTD.
70, Cheng Teh Rd., Sec.1 Taipei
Tel. (+886) 2-2556-0716 - Fax (+886) 2-2556-0717

KOREA

FUJI ELECTRIC KOREA CO., LTD.
16F Shinsong Bldg. 25-4 Youido-dong, Youngdungpo-gu Seoul
Tel. (+82) 2-780-5011 - Fax (+82) 2-783-1707

SINGAPORE

FUJI/GE PRIVATE LTD.
171 Chin Swee Road, 12-01/04 San Centre, Singapore 169877
Tel. (+65) 6533-0010 - Fax (+65) 6533-0021

USA

FUJI ELECTRIC CORP. of AMERICA
Park 80 West Plaza Saddle Brook, NJ 07663
Tel. (+1) 201-712-0555 - Fax (+1) 201-368-8258

USA

GE Fuji Drives USA, Inc.
1501 Roanoke Boulevard, Suite 435, Salem VA. 24153
Tel. (+1) 540-387-8588 - Fax (+1) 540-387-8580

GERMANY

Fuji Electric GmbH
Lyoner Strasse 26, D-60528, Frankfurt/Main
Tel. (+49) 69-6690290 - Fax (+49) 69-66902958

SPAIN

Fuji Electric GmbH, Sucursal en Espana
Parc Technologic del Valles-Nr. 023, E-08290,
Cerdanyola, Barcelona
Tel. (+34) 93-5824-333/5 - Fax (+34) 93-5824-344

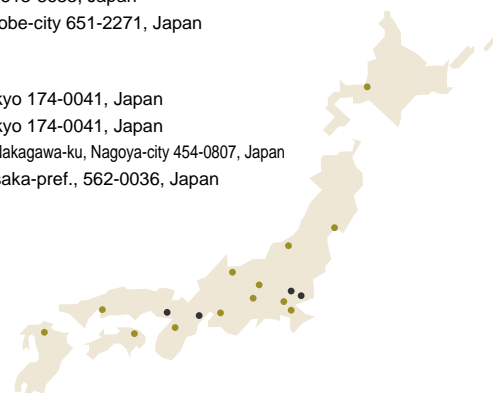
SWITZERLAND

Fuji Electric GmbH, Zweigniederlassung Altenrhein
IG-Park, CH-9423, Altenrhein
Tel. (+41) 71-858-2949 - Fax (+41) 71-858-2940



[Japan]

Sales Division	Tel.+81-(0)3-5435-7112	Gate City Ohsaki, East Tower, 11-2, Osaki 1-chome, Shinagawa-ku, Tokyo 141-0032, Japan
Chubu Branch Office	Tel.+81-(0)52-231-8175	Nagoya 1st Bldg., 19-24, Nishiki 1-chome, Naka-ku, Nagoya-city 460-0003, Japan
West Japan Branch Office	Tel.+81-(0)6-6455-3827	Fuji Electric Osaka Bldg., 11-19, Sagisu 1-chome, Fukushima-ku, Osaka-city 553-0002, Japan
Hokkaido Branch Office	Tel.+81-(0)11-271-3377	Dougin Bldg., 1, Odori-nishi 4-chome, Chuo-ku, Sapporo-city 060-0042, Japan
Tohoku Branch Office	Tel.+81-(0)22-222-1110	Nissay Sendai Bldg., 3-1, Ichibancho 1-chome, Aoba-ku, Sendai-city 980-0811, Japan
Kitakanto Branch Office	Tel.+81-(0)48-648-6600	Mitsutani Bldg., 9-1, Sakuragicho 1-chome, Omiya-ku, Saitama-city 330-0854, Japan
Hokuriku Branch Office	Tel.+81-(0)76-441-1235	Toyama Denki Bldg., 3-1, Sakurabashi-dori Ave., Toyama-city 930-0004, Japan
Chugoku Branch Office	Tel.+81-(0)82-237-6992	16-2, Misasa-kitamachi, Nishi-ku, Hiroshima-city 733-0006, Japan
Shikoku Branch Office	Tel.+81-(0)87-823-2535	19-6, Asahi-shinmachi, Takamatsu-city 760-0064, Japan
Kyushu Branch Office	Tel.+81-(0)92-263-1022	Fukuoka Dai-ichi Bldg., 2-2, Tsunabamachi, Hakata-ku, Fukuoka-city 812-0024, Japan
Koushin Branch Office	Tel.+81-(0)263-36-6740	5-35, Chuo 4-chome, Matsumoto-city 390-0811, Japan
Nagano Branch Office	Tel.+81-(0)26-228-0475	Yoko Ace Bldg., 1002, Minami-agatamachi, Nagano-city 380-0836, Japan
Niigata Branch Office	Tel.+81-(0)25-284-5518	Ebara Niigata Bldg., 16-4, Shinkocho, Niigata-city 950-0965, Japan
Value Engineering Center / ED&C Factory(Fukiage) (Otawara)	Tel.+81-(0)48-548-1111 Tel.+81-(0)287-22-7111	5-45, Minami 1-chome, Fukiagemachi, Kitaadachi, Saitama-pref., 369-0192, Japan 1043, Nakadawara, Otawara-city 324-8510, Japan
Inverter Value Engineering Center / Suzuka Factory	Tel.+81-(0)593-82-1201	5520, Minamitamagakicho, Suzuka-city 513-8633, Japan
Kobe Factory	Tel.+81-(0)78-991-2111	1-1, Takatsukadai 4-chome, Nishi-ku, Kobe-city 651-2271, Japan
Fuji Electric Technica Co., Ltd.		
Head Office	Tel.+81-(0)3-3558-5566	30-5, Funado 2-chome, Itabashi-ku, Tokyo 174-0041, Japan
Tokyo Branch Office	Tel.+81-(0)3-3558-5746	30-5, Funado 2-chome, Itabashi-ku, Tokyo 174-0041, Japan
Nagoya Branch Office	Tel.+81-(0)52-352-2411	c/o Fuji Logistics Chubu Branch, 5-1, Aichicho, Nakagawa-ku, Nagoya-city 454-0807, Japan
Osaka Branch Office	Tel.+81-(0)727-49-1171	1-1, Senbanishi 1-chome, Mino-city, Osaka-pref., 562-0036, Japan



Fuji Electric FA Components & Systems Co., Ltd.

Gate City Ohsaki, East Tower, 11-2, Osaki 1-chome, Shinagawa-ku, Tokyo 141-0032, Japan

<http://www.fujielectric.co.jp/fcs/>



Printed on 100% recycled paper using soy-based ink

FCSE001 Printed in Japan 2003-9 (103/103) CM100FIS